

Company: **Esso Australia**

Well: **SNA A-24a**

Field: **Snapper**

Rig: **ISS Rig 22**

Country: **Australia**

3.65" Powercutter
Tubing Cut Record
4-May- 2007

Rig: ISS Rig 22

Field: Snapper

Location: Bass Strait

Well: SNA A-24a

Company: Esso Australia

LOCATION			
Bass Strait Gippsland Basin	Elev.:	K.B.	33.5 m
		G.L.	-59.4 m
		D.F.	32 m
	Permanent Datum:	MSL	Elev.: 0 m
Log Measured From:	Drill Floor	32.0 m above Perm. Datum	
Drilling Measured From:	Kelly Bushing		
State: Victoria	Max. Well Deviation 62 deg	Longitude 148° 1' 31.733"E	Latitude 38° 11' 37.793"S

Logging Date	4-May-2007
Run Number	2
Depth Driller	2348 m
Schlumberger Depth	2095.5 m
Bottom Log Interval	1943 m
Top Log Interval	1943 m
Casing Fluid Type	Brine
Salinity	
Density	9.3 lbm/gal
Fluid Level	0 m
BIT/CASING/TUBING STRING	
Bit Size	8.500 in
From	691 m
To	2348 m
Casing/Tubing Size	4.500 in
Weight	12.75 lbm/ft
Grade	J-55
From	1938 m
To	2211 m
Maximum Recorded Temperatures	
Logger On Bottom	4-May-2006 3:15
Unit Number	3827 AUSL
Recorded By	C.Rowand
Witnessed By	Mr M.Wilson, Mr A.Smythe

PVT DATA		Run 1	Run 2	Run
Oil Density				
Water Salinity				
Gas Gravity				
Bo				
Bw				
1/Bg				
Bubble Point Pressure				
Bubble Point Temperature				
Solution GOR				
Maximum Deviation	62 deg			
CEMENTING DATA				
Primary/Squeeze	Primary			
Casing String No				
Lead Cement Type				
Volume				
Density				
Water Loss				
Additives				
Tail Cement Type				
Volume				
Density				
Water Loss				
Additives				
Expected Cement Top				
Logging Date				
Run Number				
Depth Driller				
Schlumberger Depth				
Bottom Log Interval				
Top Log Interval				
Casing Fluid Type				
Salinity				
Density				
Fluid Level				
BIT/CASING/TUBING STRING				
Bit Size				
From				
To				
Casing/Tubing Size				
Weight				
Grade				
From				
To				
Maximum Recorded Temperatures				
Logger On Bottom				
Unit Number				
Recorded By				
Witnessed By				

DEPTH SUMMARY LISTING

Date Created: 4-MAY-2007 3:48:44

Depth System Equipment

Depth Measuring Device		Tension Device		Logging Cable	
Type:	IDW-H	Type:	CMTD-B/A	Type:	2-32ZT
Serial Number:	794	Serial Number:	1711	Serial Number:	24031
Calibration Date:	20-Mar-2007	Calibration Date:	3-May-07	Length:	5550.10 M
Calibrator Serial Number:	9	Calibrator Serial Number:	1173		
Calibration Cable Type:	2-32ZT	Calibration Gain:	0.99	Conveyance Method:	Wireline
Wheel Correction 1:	-3	Calibration Offset:	-553.00	Rig Type:	Offshore_Fixed
Wheel Correction 2:	-3				

Depth Control Parameters

Log Sequence:	Subsequent Log In the Well
Reference Log Name:	Tubing Tally
Reference Log Run Number:	
Reference Log Date:	NA

Depth Control Remarks

1. Correlated to Tubing Tally
2. Used IDW as primary depth control
3. Used Z_Chart as secondary depth control
- 4.
- 5.
- 6.

DISCLAIMER

THE USE OF AND RELIANCE UPON THIS RECORDED-DATA BY THE HEREIN NAMED COMPANY (AND ANY OF ITS AFFILIATES, PARTNERS, REPRESENTATIVES, AGENTS, CONSULTANTS AND EMPLOYEES) IS SUBJECT TO THE TERMS AND CONDITIONS AGREED UPON BETWEEN SCHLUMBERGER AND THE COMPANY, INCLUDING: (a) RESTRICTIONS ON USE OF THE RECORDED-DATA; (b) DISCLAIMERS AND WAIVERS OF WARRANTIES AND REPRESENTATIONS REGARDING COMPANY'S USE OF AND RELIANCE UPON THE RECORDED-DATA; AND (c) CUSTOMER'S FULL AND SOLE RESPONSIBILITY FOR ANY INFERENCE DRAWN OR DECISION MADE IN CONNECTION WITH THE USE OF THIS RECORDED-DATA.

OTHER SERVICES1	OTHER SERVICES2
OS1:	OS1:
OS2:	OS2:
OS3:	OS3:
OS4:	OS4:
OS5:	OS5:

REMARKS: RUN NUMBER 1	REMARKS: RUN NUMBER 2
-----------------------	-----------------------

Log correlated to Tubing Tally

Objective:

Rig up wireline, RIH with a 3.65" Powercutter with 1-11/16" CCL and cut the

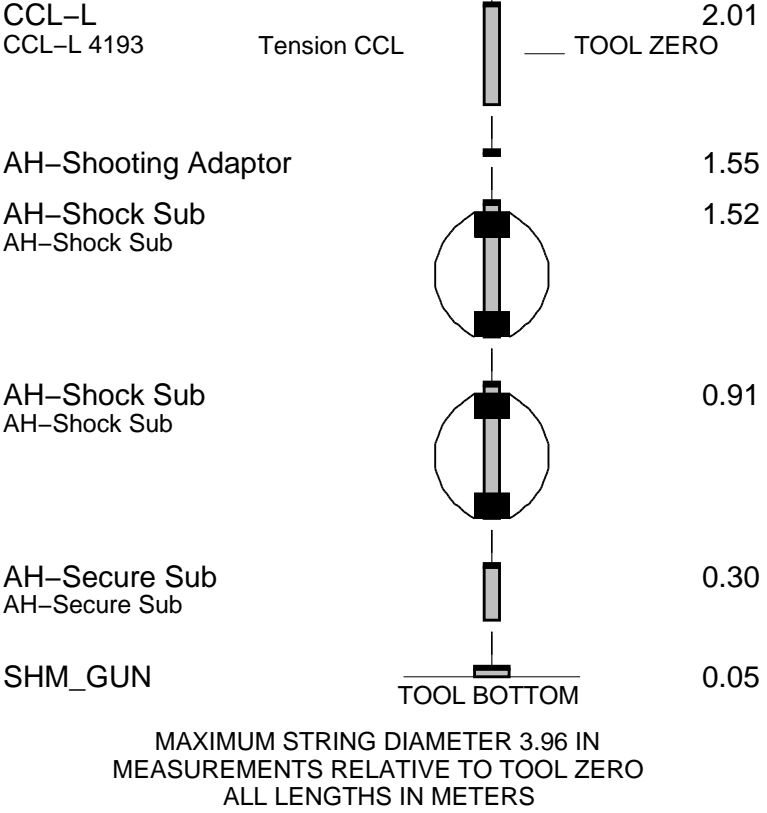
4-1/2" tubing above the top Packer @ 1943 M.

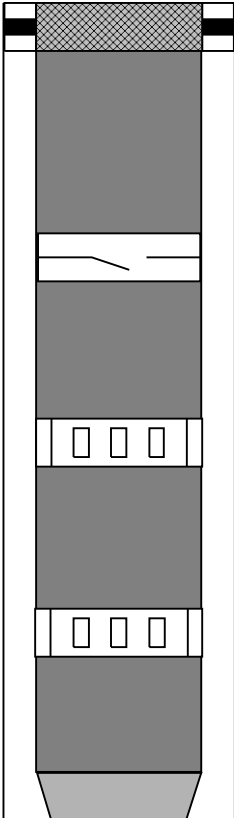
Tubing pulled to 124 Kips during the cut.

Tubing cut with Powercutter @ 1943 M

Powercutter CCI to Cutter = 1.91M

Schlumberger Crew:					
Operators					
Days: Peter Battams, Gerald Brady					
Nights: Dave Stuckey, Simon Kiss					
RUN 1			RUN 2		
SERVICE ORDER #:			SERVICE ORDER #:		
PROGRAM VERSION:			PROGRAM VERSION:		
FLUID LEVEL:			FLUID LEVEL:		
15C0-309			0 m		
LOGGED INTERVAL	START	STOP	LOGGED INTERVAL	START	STOP
EQUIPMENT DESCRIPTION					
RUN 1			RUN 2		
SURFACE EQUIPMENT					
WITM (SHM)					
DOWNHOLE EQUIPMENT					
MH-22					
MH-22					
EQF-46					
EQF-46					
EQF-46					
EQF-46					



Production String	(in)		(m)	Well Schematic	(m)		(in)	Casing String
	OD	ID	MD		MD	OD	ID	
Tubing Hanger	7.63	5.50	10		7.625	6.969	Casing String	
Tubing	5.50	4.89						
SSSV	5.50	4.56	464					
Sliding Sleeve	5.50	4.56	848					
Sliding Sleeve	5.50	4.56	1387					
Crossover Joint	5.50	4.50	1938.0					

PIP SUMMARY

Time Mark Every 60 S

Raw Casing Collar Locator (RCCL)

-3 (----) 17

Casing Collar Locator (CCL)

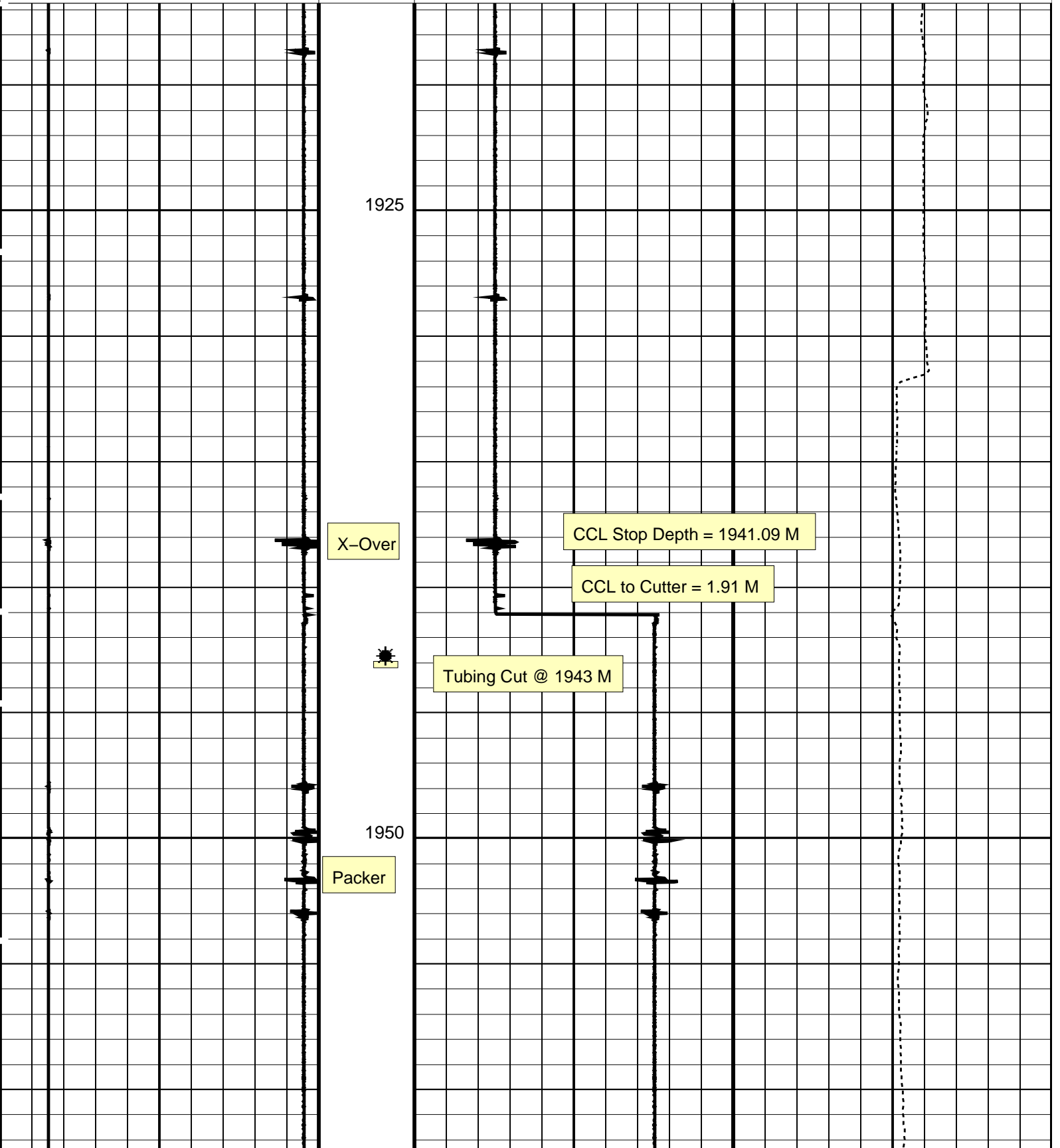
-19 (----) 1

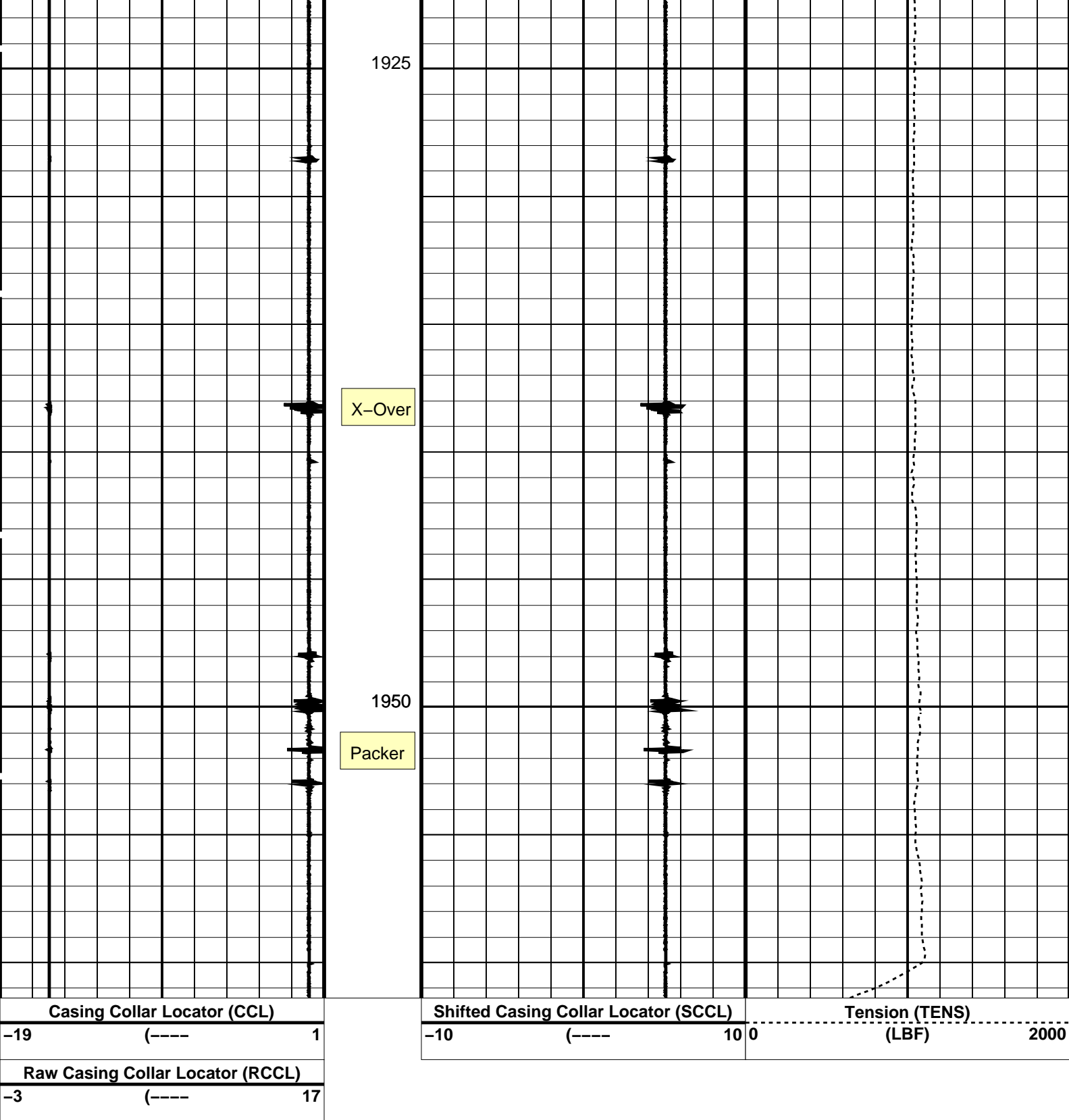
Shifted Casing Collar Locator (SCCL)

-10 (----) 10

Tension (TENS)

(LBF) 0 2000





PIP SUMMARY

Time Mark Every 60 S

Parameters

DLIS Name	Description	Value
CCL-L: Casing Collar Locator		
CCLD	CCL reset delay	12 IN
CCLT	CCL Detection Level	0.3 V

Format: CCLLog Vertical Scale: 1:200

Graphics File Created: 04-May-2007 02:49

OP System Version: 15C0-309
MCM

SHM_GUN	SRPC-3357-Q2_2007	CCL-L	15C0-309
Output DLIS Files			
DEFAULT	PERFO_017LUP	FN:17	PRODUCER 04-May-2007 02:49
Company:	Esso Australia	Schlumberger	
Well:	SNA A-24a		
Field:	Snapper		
Rig:	ISS Rig 22		
Country:	Australia		
3.65" Powercutter Tubing Cut Record 4-May- 2007			